



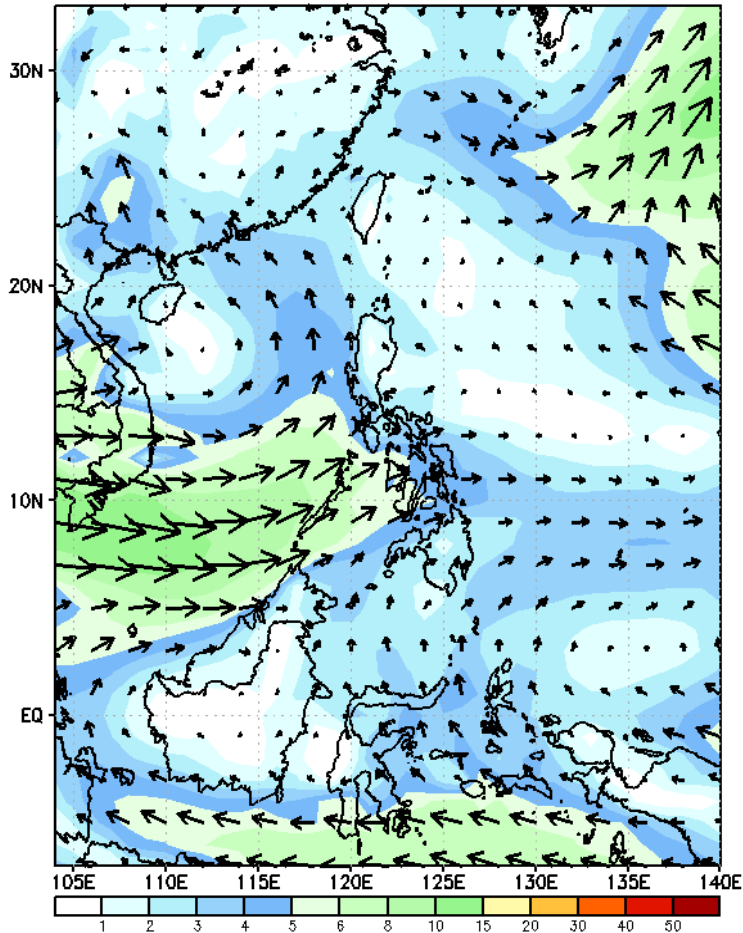
Week 1 & Week 2 Forecast for the Philippines using GEFS Model



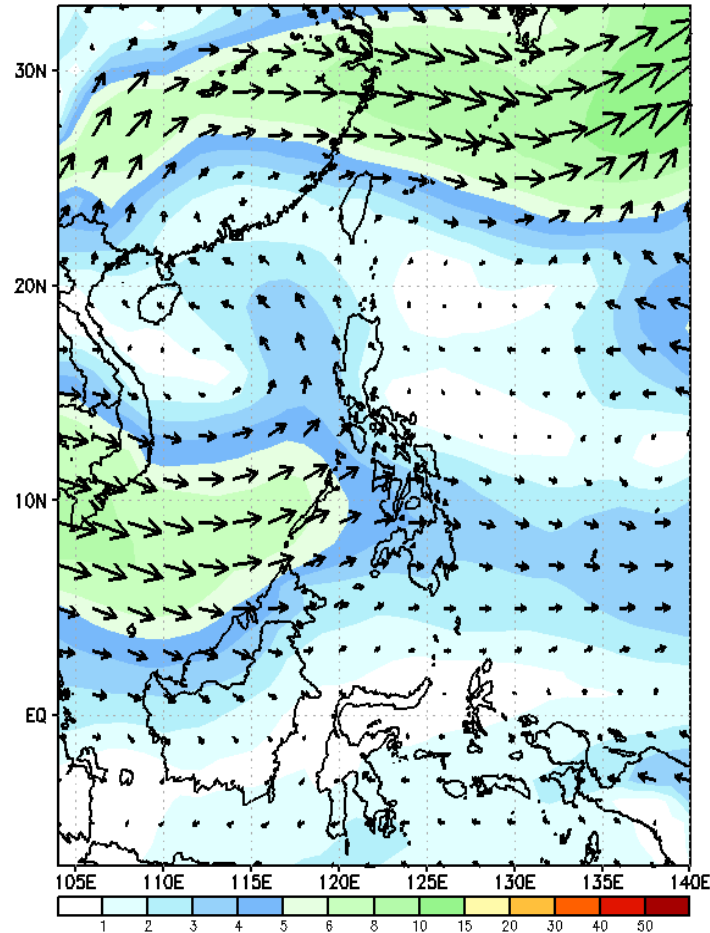
GEFS Week-1 Forecasts: Wind Forecast

Week 1: Jun 02 - 08, 2023

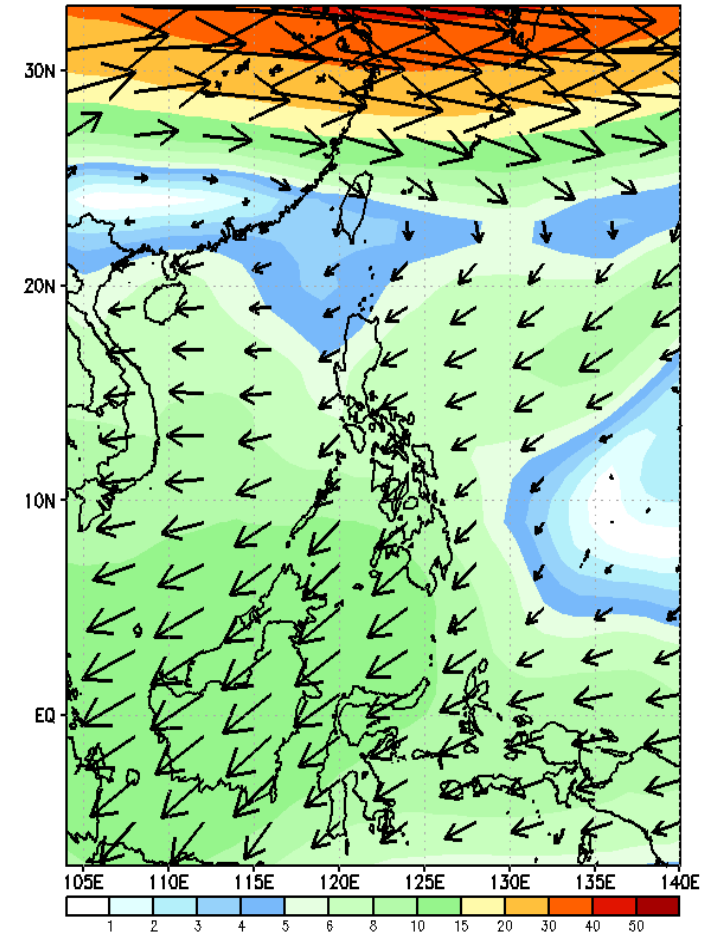
GEFS Week-1 850-hPa Wind Total
Valid: 20230602 - 20230608



GEFS Week-1 700-hPa Wind Total
Valid: 20230602 - 20230608



GEFS Week-1 200-hPa Wind Total
Valid: 20230602 - 20230608



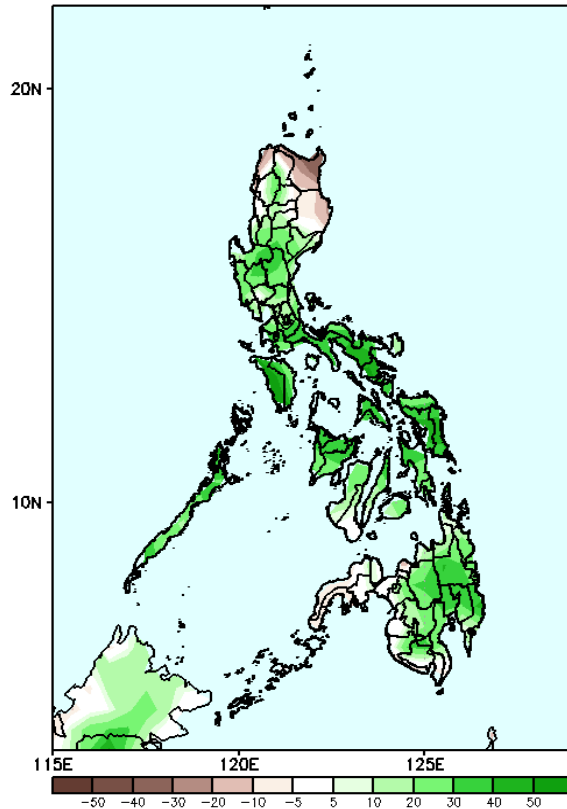
Southwest Monsoon is forecasted to prevail in most parts of the country.

Precipitation Anomaly and Exceedance Probability > 25/50 mm



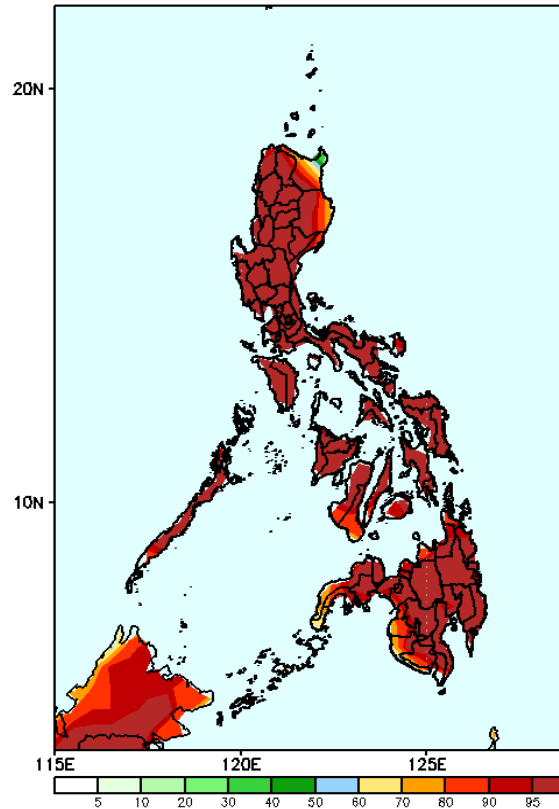
Week 1: Jun 02 - 08, 2023

GEFS Week-1 Precip Anomaly
Valid: 20230602 - 20230608



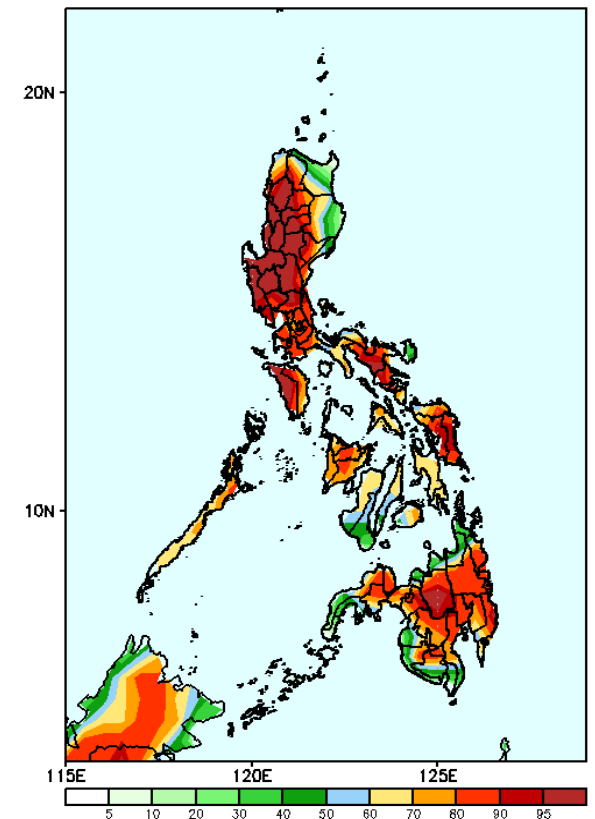
Rainfall increase of more than 60mm is expected in most parts of the country except Ilocos Norte, Cagayan and Isabela where 40mm deficit of rainfall will be likely.

GEFS Week-1 Exceedance Prob. > 25mm
Valid: 20230602 - 20230608



High to a very high probability to exceed 25mm of rainfall across the country.

GEFS Week-1 Exceedance Prob. > 50mm
Valid: 20230602 - 20230608

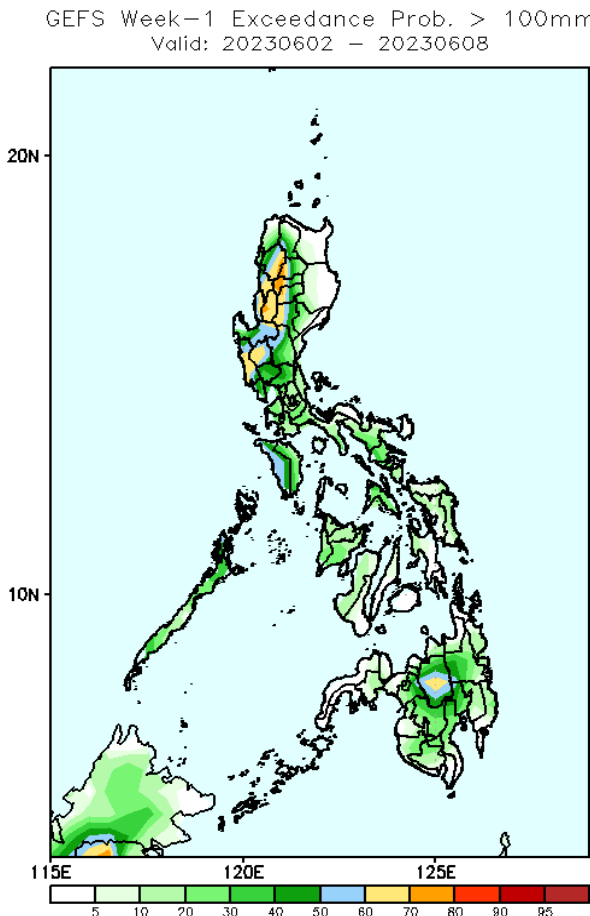


High to very high probability to exceed 50mm of rainfall over most parts of the country aside from moderate to high likelihood over the Cagayan Valley, Central Visayas and some parts of the western and northern sections of Mindanao.

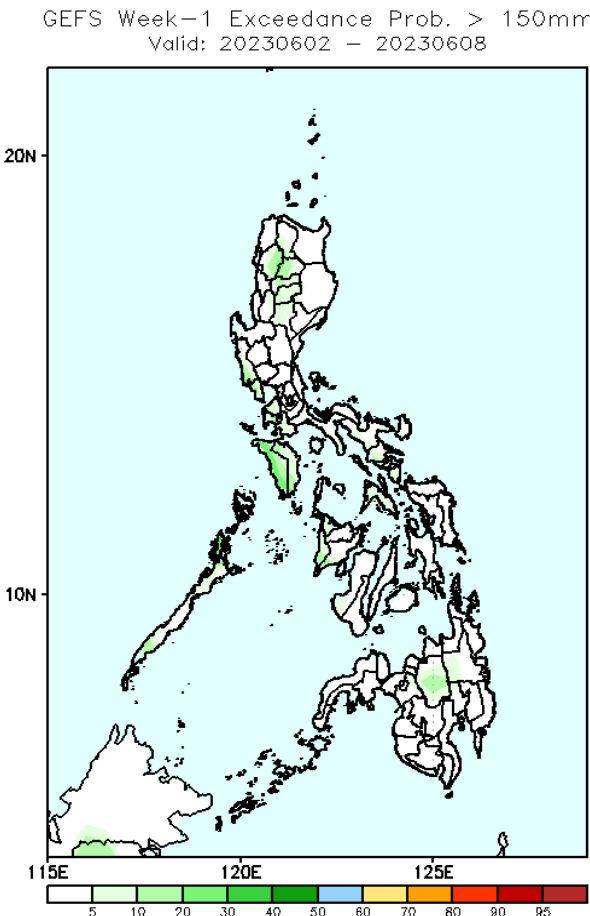
Exceedance Probability > 100/150/200 mm

Week 1: Jun 02 - 08, 2023

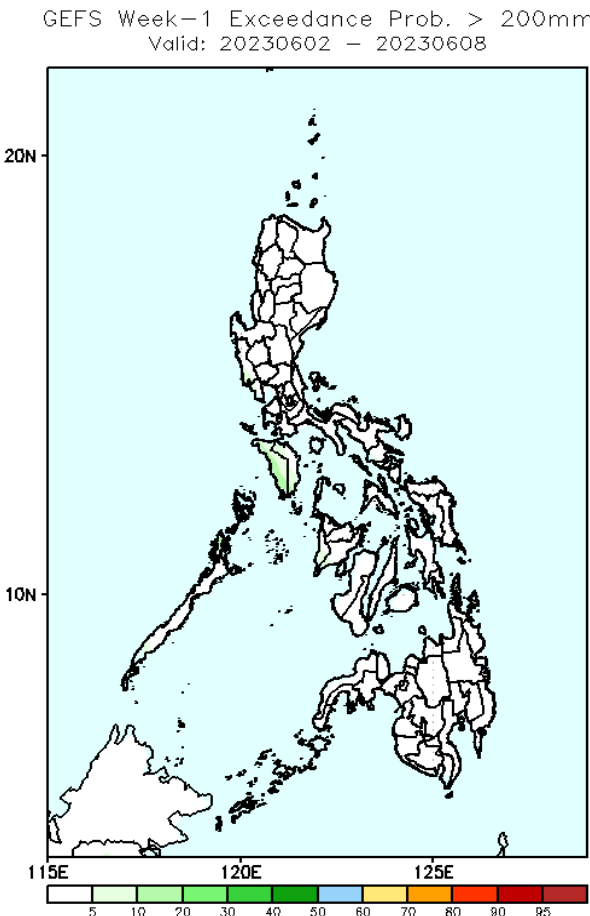
- Very high probability
- High Probability
- Moderate Probability
- Low Probability



Moderate to high probability to exceed 100mm of rainfall over the western sections of Central and Northern Luzon, Occidental Mindoro and Bukidnon while low likelihood over the rest of the country.



Low probability to exceed 150mm of rainfall over the rest of the country.

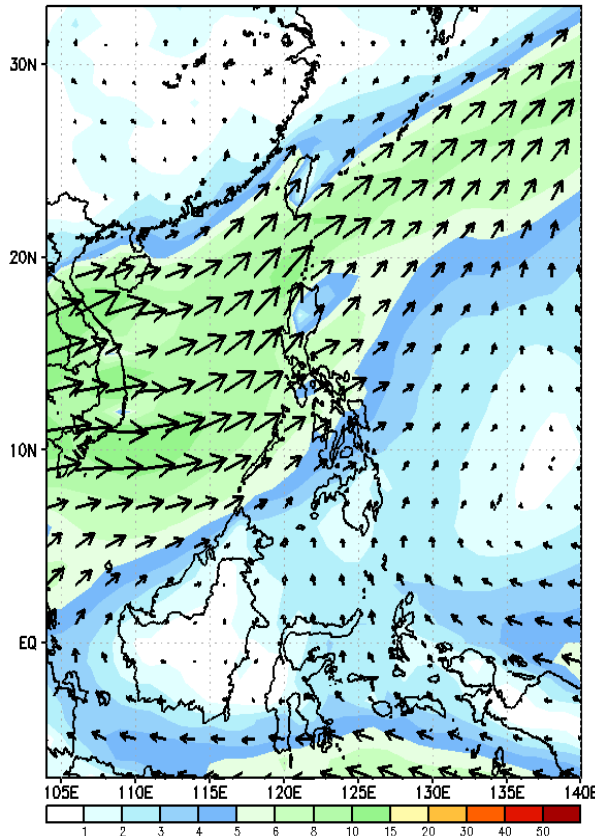


Low probability to exceed 200mm of rainfall over the rest of the country.

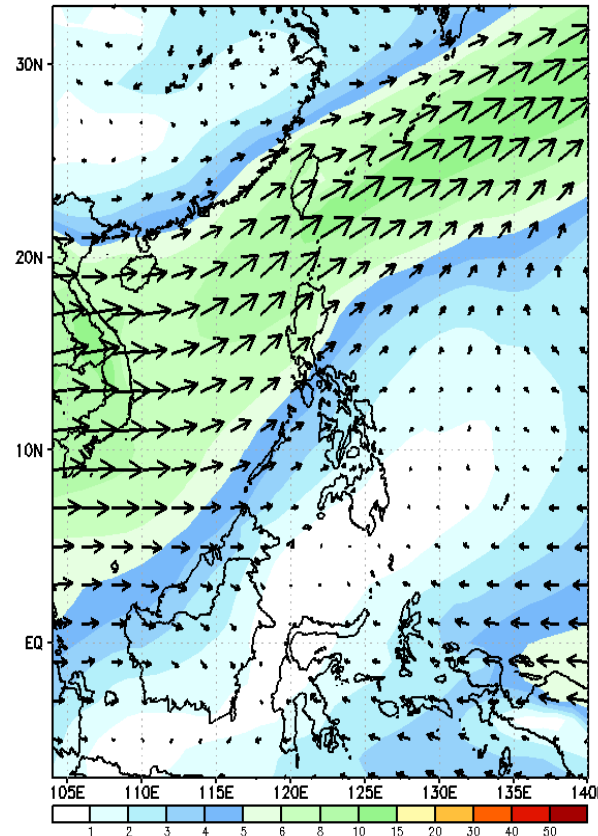
GEFS Week-2 Forecasts: Wind Forecast

Week 2: June 09 - 15, 2023

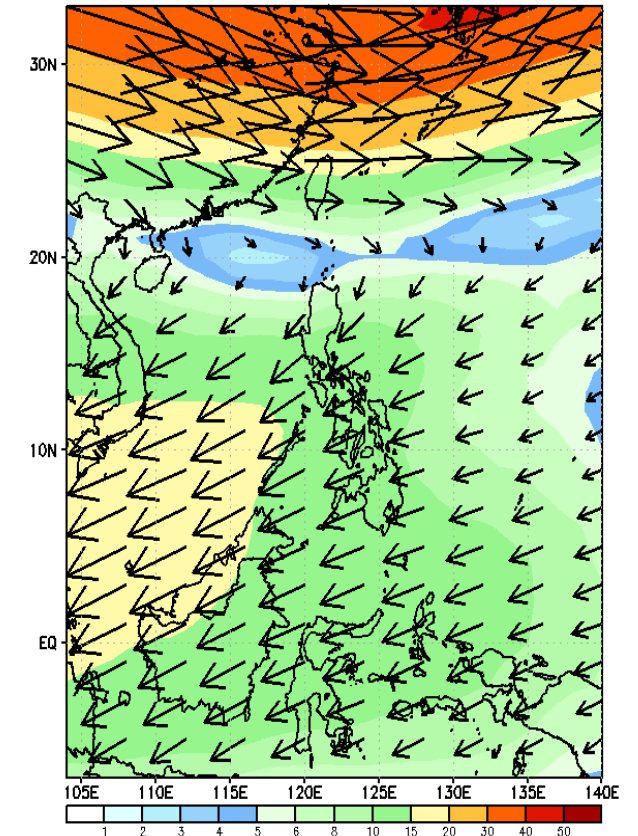
GEFS Week-2 850-hPa Wind Total
Valid: 20230609 - 20230615



GEFS Week-2 700-hPa Wind Total
Valid: 20230609 - 20230615



GEFS Week-2 200-hPa Wind Total
Valid: 20230609 - 20230615



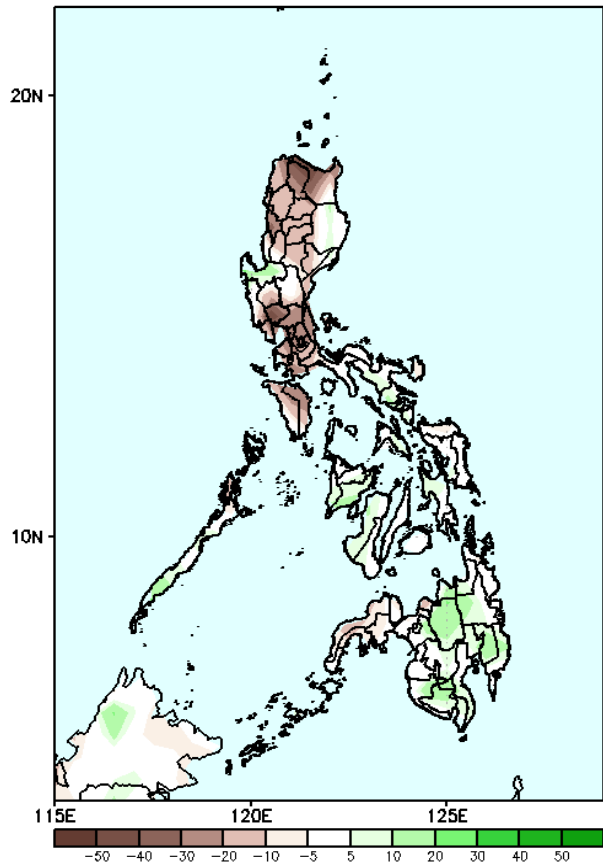
Southwest monsoon is forecasted to prevail in Luzon and Western Visayas while easterlies will likely affect the rest of Visayas and Mindanao.

Precipitation Anomaly and Exceedance Probability > 25/50 mm

Week 2: June 09 - 15, 2023

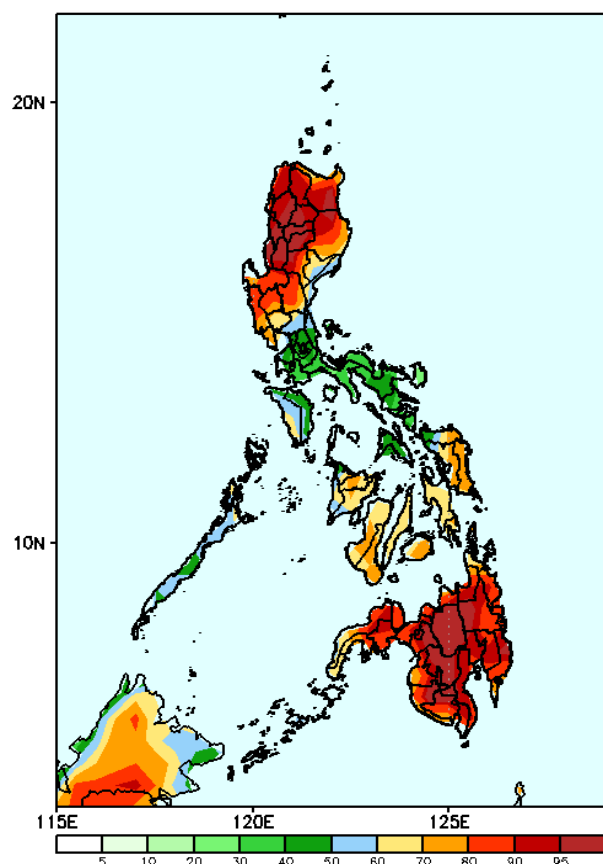
- Very high probability
- High Probability
- Moderate Probability
- Low Probability

GEFS Week-2 Precip Anomaly
Valid: 20230609 - 20230615



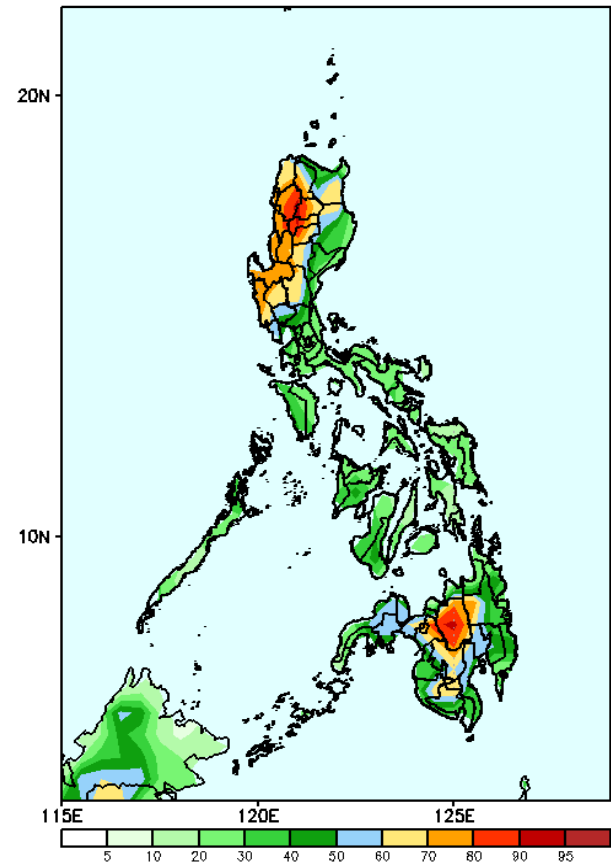
Rainfall deficit of more than 50mm is expected in most parts of Luzon, Visayas and Zamboanga peninsula while an increase of 20-60mm of rainfall is more likely for the remaining parts of the country.

GEFS Week-2 Exceedance Prob. > 25mm
Valid: 20230609 - 20230615



High to a very high probability to exceed 25mm of rainfall in Central and Northern Luzon and Mindanao, while moderate to high likelihood over Visayas and the rest of Luzon .

GEFS Week-2 Exceedance Prob. > 50mm
Valid: 20230609 - 20230615



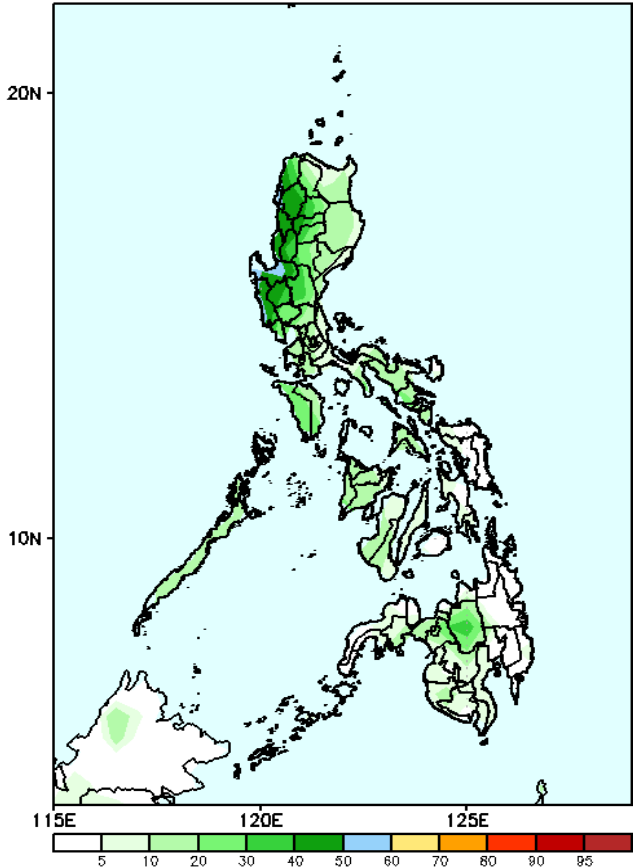
High to a very high probability to exceed 50mm of rainfall in the Ilocos region, CAR, Central Luzon, Bukidnon, Cotabato and Lanao del Sur while low to moderate chance over the rest of the country.

Exceedance Probability > 100/150/200 mm

Week 2: June 09 - 15, 2023

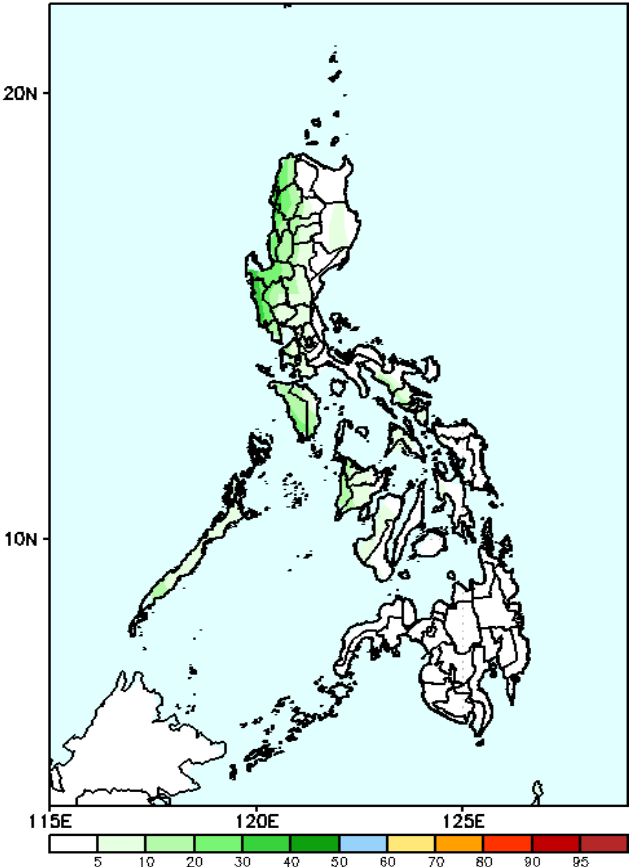
- Very high probability
- High Probability
- Moderate Probability
- Low Probability

GEFS Week-2 Exceedance Prob. > 100mm
Valid: 20230609 - 20230615



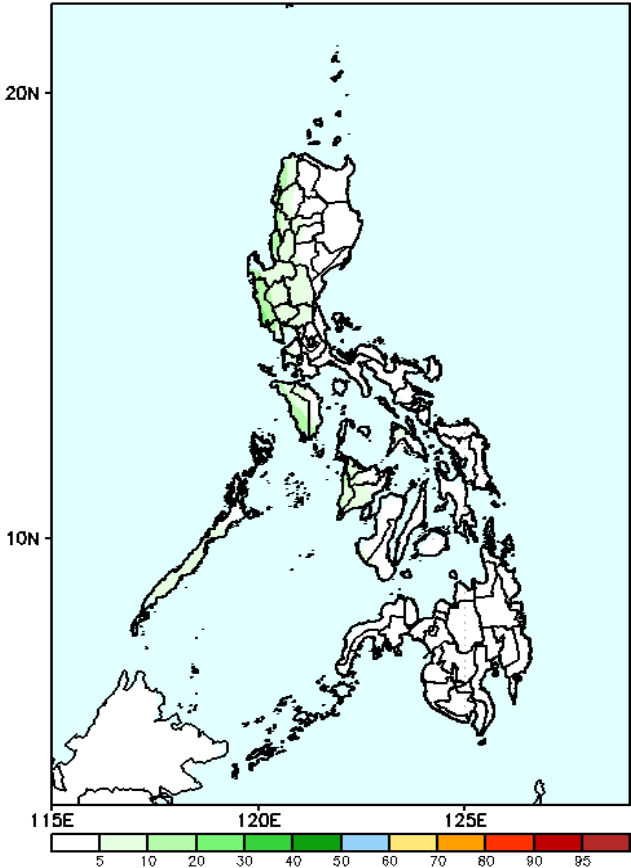
Moderate probability to exceed 100mm of rainfall over the western section of Central and Northern Luzon while low to moderate chance for the rest of the country.

GEFS Week-2 Exceedance Prob. > 150mm
Valid: 20230609 - 20230615



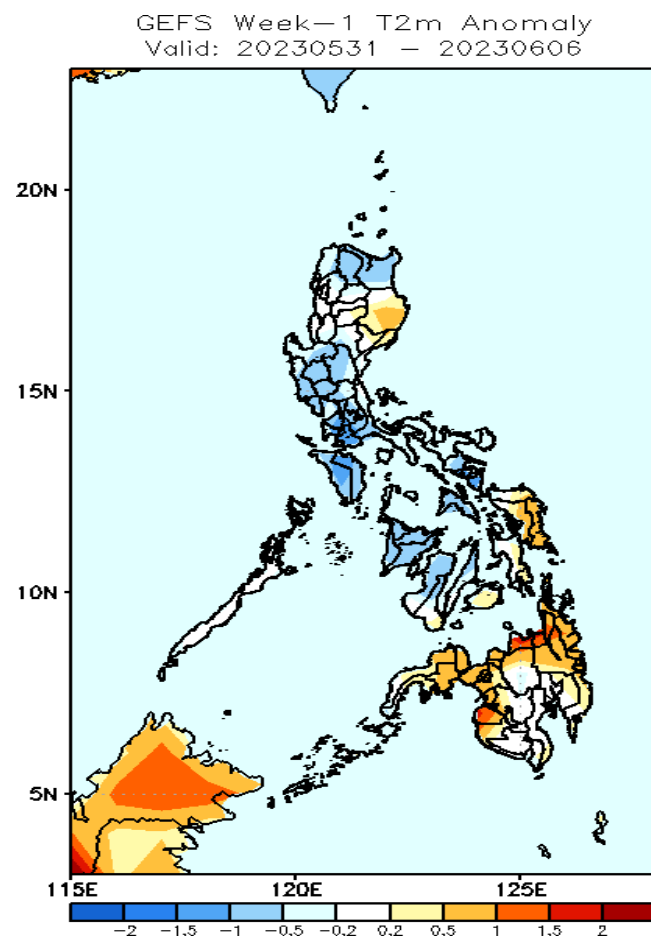
Low probability to exceed 150mm of rainfall over the rest of the country.

GEFS Week-2 Exceedance Prob. > 200mm
Valid: 20230609 - 20230615



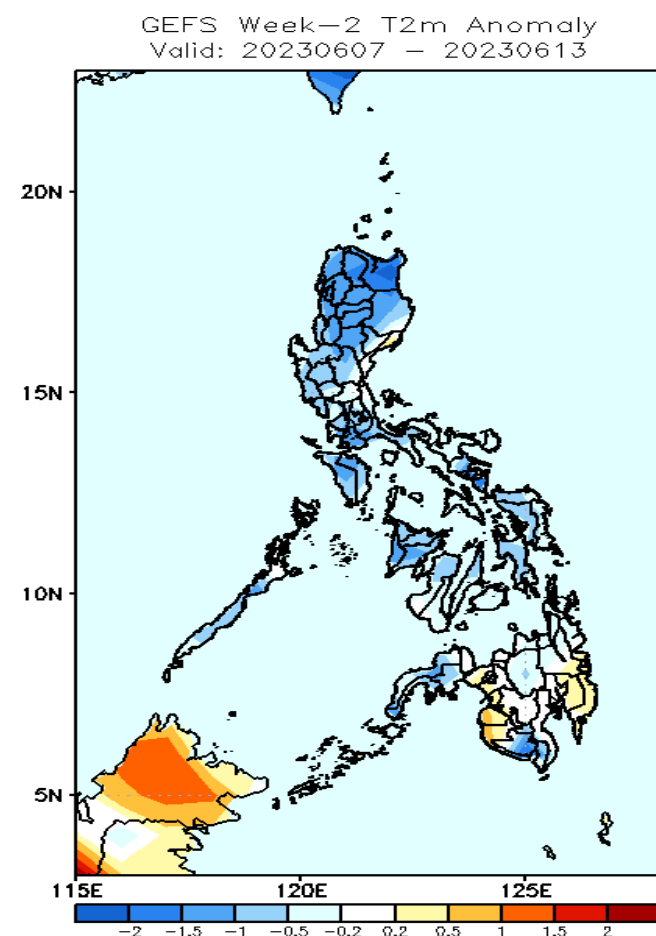
Low probability to exceed 200mm of rainfall over the rest of the country.

GEFS Week-1 & 2 Forecasts: T2m Anomaly



2m Temperature Week 1: June 02 - 08, 2023

Cooler than average surface air temperature will likely experience in most parts of Luzon, Western Visayas and Cebu while slightly warmer to warmer than average temperature will be likely in Isabela, Nueva Vizcaya and the rest of Visayas and Mindanao.



2m Temperature Week 2: June 09 - 15, 2023

Average to cooler than average surface air temperature will likely experience in most parts of the country except in Davao Region, Maguindanao, Sultan Kudarat and Lanao provinces where slightly warmer than average temperature is forecasted.

